



CLOSER TO NATURE THROUGH
DIFFUSED LIGHT REFLECTION



Keep smiling



IT'S SO EASY

More natural through diffused light reflection

The common perception is that natural light transmission has only been achieved by all-ceramic restorations up to now.

VINTAGE MP defines a new generation of metal bonded porcelain, designed according to the latest findings of porcelain technology.

Thanks to a new production process, the ultra-fine micro porcelain is adapted to the diffused light reflection of natural enamel and dentine.

One advantage of an increase of the diffused light reflection of the dentine powders is that a greater part of the incidental light is not being refracted or spread by the opaquer, but already in the dentine layer.



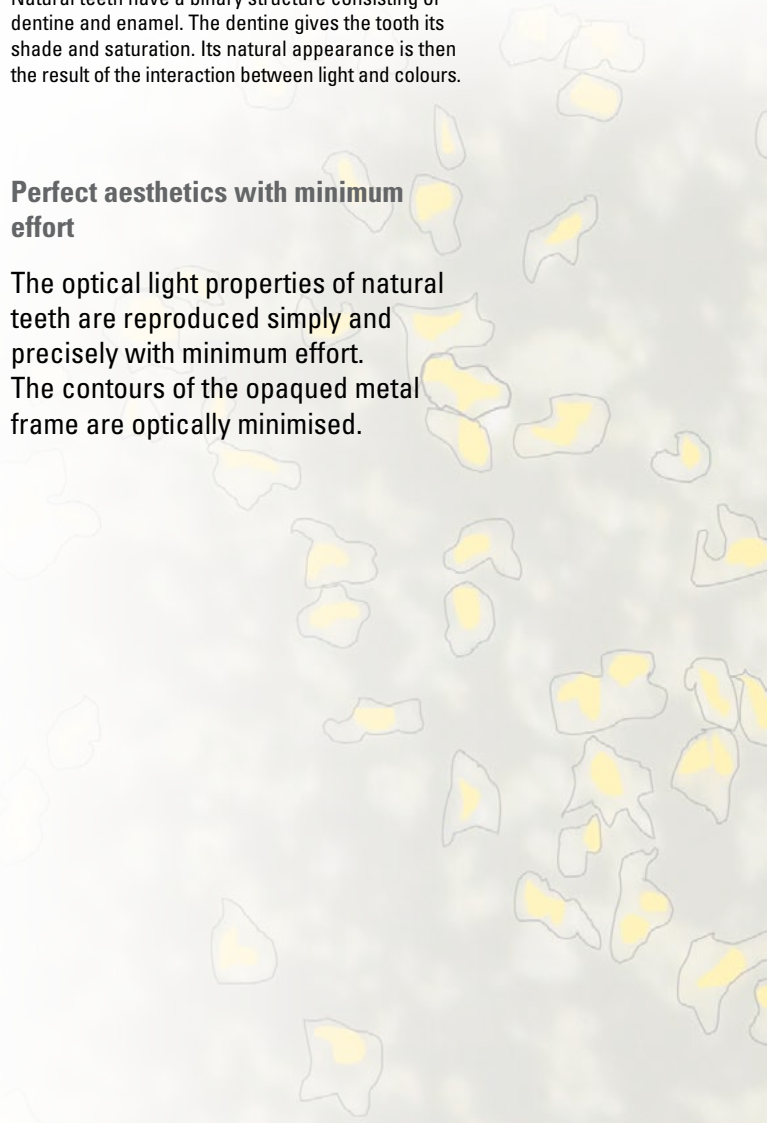
Natural teeth have a binary structure consisting of dentine and enamel. The dentine gives the tooth its shade and saturation. Its natural appearance is then the result of the interaction between light and colours.



In transmitted light, a VINTAGE MP PFM crown tends to look more like a metal-free restoration, because the contours of the opaqued metal frame are barely perceptible.

Perfect aesthetics with minimum effort

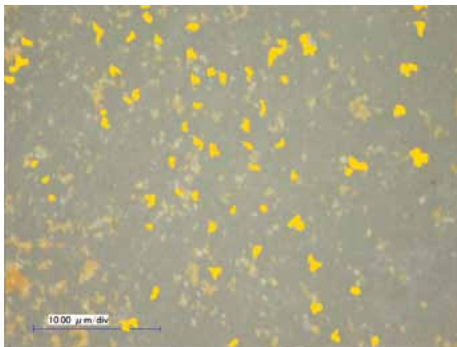
The optical light properties of natural teeth are reproduced simply and precisely with minimum effort. The contours of the opaqued metal frame are optically minimised.



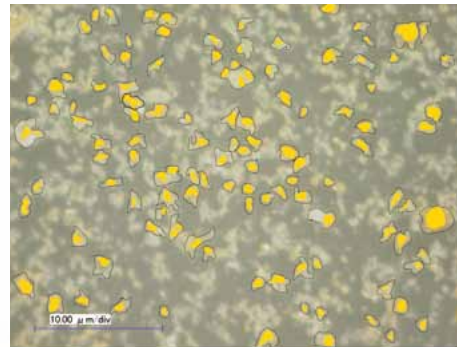
Product of experience and competence

VINTAGE MP is the product of more than 30 years of experience. Based on the knowledge gained with the established PFM systems VINTAGE and VINTAGE Halo which are used worldwide, the new **VINTAGE MP** porcelain also draws on the experiences with the current veneer systems for metal-free structures, such as VINTAGE ZR.

In addition to the tooth-like diffused light reflection provided by the new porcelain structure it also offers a leucite-reinforced crystalline structure that shows particular temperature-resistant colour pigments in the crystal and glass phases compared to conventional ceramics, even after several firing processes. The colour brilliance and penetration of the porcelain are also preserved after several firings.



Colour pigments and metal oxides are unprotected in conventional porcelains and reduce with every firing. The porcelain material changes in colour intensity and brilliance.

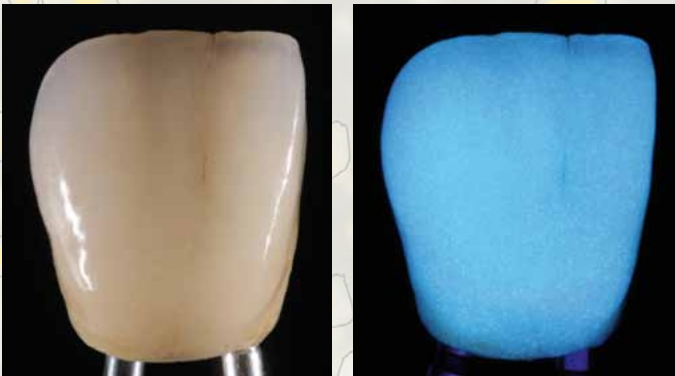


With VINTAGE MP, the colour pigments and metal oxides are covered with protective glass. The colouration, translucency and brilliance are retained, even after several firings.

As a result of this technology, all conventional, high-fusing PFM alloys, whether high gold, bio or non-precious, can be veneered simply with a natural looking light transmission and in an economic time frame with **VINTAGE MP**, with a recommended CTE range of 13.6 to 15.2.

Natural fluorescence

Natural fluorescence is created from deep down in the tooth. **VINTAGE MP** convinces with its natural appearance in all light conditions, for all porcelain powders and with the intensively fluorescent margin and cervical powders achieve a natural radiance that comes from the deep layers.



The naturalness of the new VINTAGE MP porcelain powders is demonstrated under all natural light conditions and under ultraviolet light.

THE BENEFITS

SECURITY

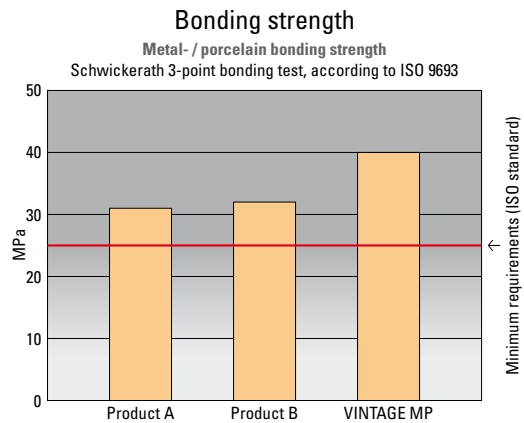
- Safe and simple application on all PFM alloys with a CTE range of 13.6 to 15.2 x 10⁻⁶K⁻¹ (25-500 °C)
- Above average bonding strength with all PFM alloys using the orange-coloured Base Opaque
- Exceptional colour stability due to "glass coating" of the colour pigments
- Less abrasive to natural opposing teeth

EFFICIENCY

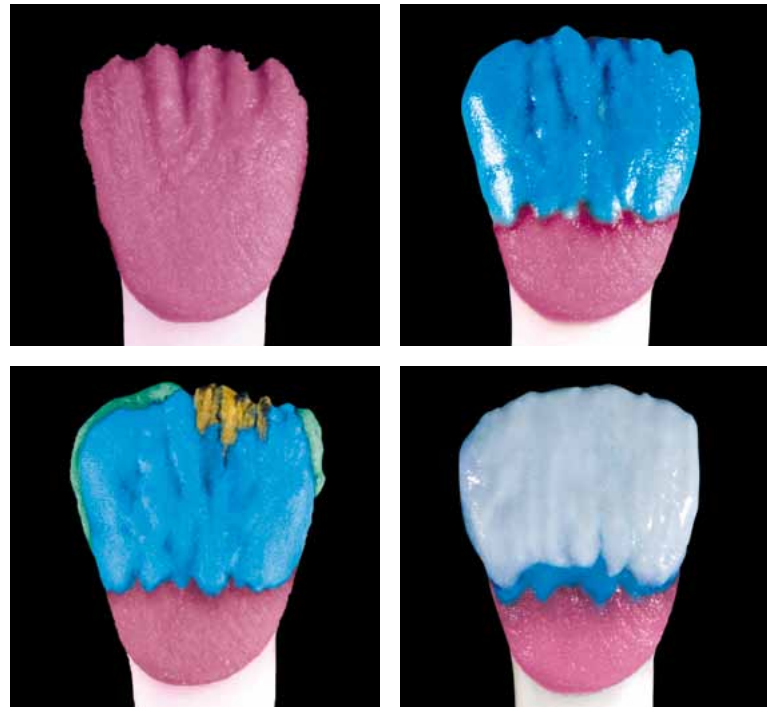
- Extremely fine paste opaques provide superb cover characteristics
- Natural aesthetics within an economic timeframe by a modified two-layer technique
- Low shrinkage during firing and homogeneous, dense surfaces
- Optimal working properties due to good build up stability and modelling characteristics
- Colour correspondence with the VINTAGE ZR porcelain system: "One concept for two systems"

VERSATILITY

- Highly fluorescent margin and cervical trans powders
- Versatile applicable opalescent incisal and effect powders
- Matching to the VITA* Classical colour system
- Additional bleaching colours are available



In relation to the required ISO value the bonding strength is considerably higher due to the Base Opaque.



The good build up stability and modelling characteristics of the VINTAGE MP powders simplify the layer application and contribute to a harmonious aesthetic appearance.

* VITA is a registered trademark of VITA Zahnfabrik, Bad Säckingen

Superior bonding and masking with extremely thin layers

Base Opaque

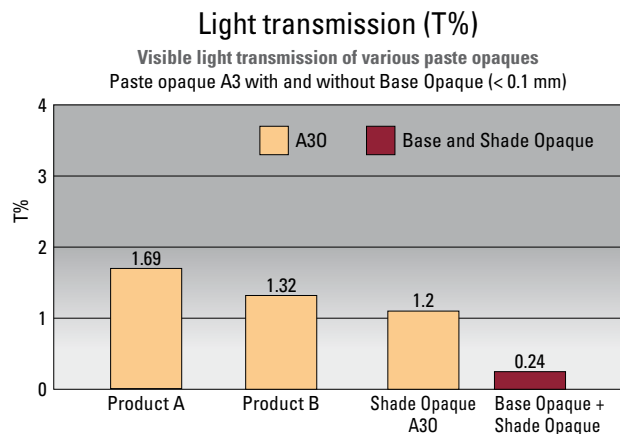
The particle structure of the ready-for-use orange-coloured Base Opaque is exceptionally fine. Even a thinly applied layer (0.05 mm) increases the bonding to the alloy and supports the opacity of the opaques. Non-precious alloys quickly and easily achieve a pleasant and warm basic shade.



By simply applying the orange-coloured Base Opaque superb bonding to the PFM alloy is achieved.

Shade Opaque

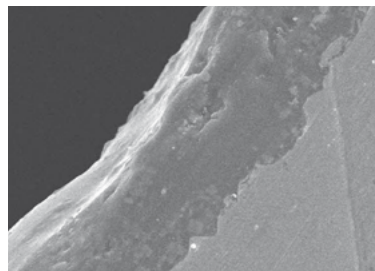
VINTAGE MP Shade Opaque has a similar fine particle structure as the Base Opaque and creates an extremely opaque and homogeneous layer. Crowns and bridges are primed simply and quickly according to the desired tooth shade after just one layer.



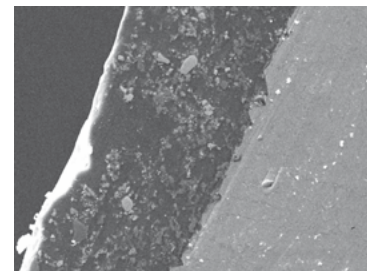
VINTAGE MP Shade Opaque, used in combination with Base Opaque, provides a perfect colour base with an exceptionally thin layer.

Perfect symbiosis

When used in combination, a complete opaquing of the frames with layers of just 0.1 mm is ensured. Particularly with small spaces, there is still sufficient room available for the subsequent layering.



Base Opaque achieves superb bonding to the alloy after firing.



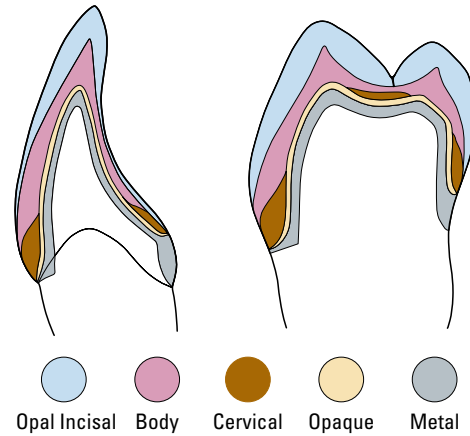
Base Opaque and Shade Opaque merge together to form a tight unit.

THE ECONOMIC PRINCIPLE

Maximum aesthetics with minimum effort

VINTAGE MP enables a modified two-layer technique similar to the dentine-enamel structure of natural teeth with results that cannot be distinguished from nature.

The harmonious interplay between the individual powders, the perfect handling properties and a very good firing performance ensure an efficient procedure.



Two porcelain systems – one colour system

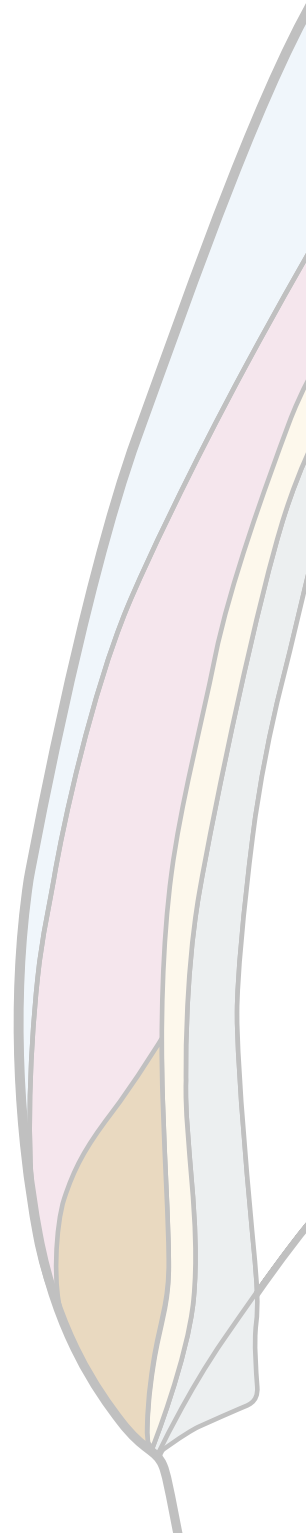
All individual powders of the **VINTAGE MP** system correspond in their colour coordination to the shades of the VINTAGE ZR porcelain powders. This coordination permits an identical layer structure and a reliable colour reproduction particularly with combined porcelain constructions.

In addition to the standard powders, the **VINTAGE MP** porcelain system offers a versatile spectrum of individual highly fluorescent powders for the margin and cervical areas as well as opalescent translucent effect powders for the design of the incisal zones that is harmonised to the individual patient. With this range of colours, all aesthetic challenges and characterisations can be realised.

SHOFU colours

Shade	W0	W1	W2	W3	rootA
BASE OPAQUE	●				
SHADE OPAQUE	●	●	●	●	●
CERVICAL					● AC
MARGIN	●	W0M:2 NM:1	W0M:1 NM:2	●	●
OPAQUE DENTIN	●	OD-W0:2 OD-N:1	OD-W0:1 OD-N:2	●	●
BODY	●	●	●	●	●
OPAL ENAMEL	OPAL55	OPAL56	OPAL56:2 OPAL57:1	OPAL56:1 OPAL57:2	OPAL60
INCISAL					● 60
TRANSLUCENT					●

Apart from the 16 renowned shades of the VITA* Classical colour system, the **VINTAGE MP** porcelain system offers a supplementary chroma intense SHOFU colour "root A" for the A-group, as well as four SHOFU bleaching shades "W0-W3" for a precise and patient specific colour reproduction.



VITA* Classical colours

Shade	A1	A2	A3	A3.5	A4	B1	B2	B3	B4	C1	C2	C3	C4	D2	D3	D4
BASE OPAQUE	[Color swatches for Base Opaque]															
SHADE OPAQUE	[Color swatches for Shade Opaque]															
CERVICAL	—		A3B:2 AC:1	A3.5B:1 AC:1	A4B:1 AC:1	—		B3B:1 BC:1	BC	—	C2B:2 CC:1	C3B:1 CC:1			DC	
MARGIN						NM:1 B2M:1		B2M:1 B4M:1		NM:1 C2M:1		C2M:1 C4M:1		NM:1 D3M:1		D3M:1 B4M:1
OPAQUE DENTIN						OD-N:1 OD-B2:1		OD-B2:1 OD-B4:1		OD-N:1 OD-C2:1		OD-C2:1 OD-C4:1		OD-N:1 OD-D3:1		OD-D3:1 OD-B4:1
BODY	[Color swatches for Body]															
OPAL ENAMEL	OPAL57	OPAL58	OPAL59	OPAL59:1 OPAL60:1	OPAL60	OPAL57	OPAL58	OPAL59	OPAL60	OPAL58	OPAL59	OPAL60	OPAL58	OPAL59		
INCISAL																
TRANSLUCENT	[Color swatches for Translucent]															
			59		60	57	58	59	60	58	59	60	59	60	59	59

* VITA is a registered trademark of VITA Zahnfabrik, Bad Säckingen

Effect colours

OPAQUE MODIFIER	OM-G	OM-O	OM-Br	OM-Y	OM-BG	OM-LF	OM-DP			
CERVICAL TRANS	CT-A	CT-B	CT-R	CT-W	CT-CL					
MARGIN EFFECT	CLM	LPM	DPM	OrM	BrM	MLM	MDM			
COLOR EFFECT	MP	Mlv	MY	RED	O	Y	G	W	Br	Bl
GUM COLOR	GUM-LP	GUM-DP	GUM-V	GUM-Or						
OPAL EFFECT	OPAL T	OPAL SL	OPAL MI	OPAL WB	OPAL WE	OPAL OC	OPAL AM-R	OPAL AM-Y	OPAL AM-V	
ENAMEL EFFECT	T	T-Glass	BT	PT	GT	OT				
CORRECTION	ADD-ON B	ADD-ON T	CPM FINE							

VINTAGE MP System Sets

VINTAGE MP Standard Set HC

The cost-effective attractive introduction to the VINTAGE MP technology in the shades A1-A4, B2 and B3 as well as C2.

This set includes all the necessary components for the production of attractive PFM restorations.

VINTAGE MP Enamel Effect Set

Opalescent incisal and translucent powders as well as cervical translucent powders for an individual, natural light transmission in the incisal and body area.

VINTAGE MP Margin Porcelain Set

Highly fluorescent powders for accurate aesthetic margins in the shades W0 to D4. Various margin effect powders offer a natural adaptation to every natural colour shade.

VINTAGE MP Starter Set

Ideal for familiarising yourself with the aesthetic possibilities offered by the VINTAGE MP porcelain system. The comprehensively equipped Starter Sets contain all the components for the production of the shades A2 or A3.

VINTAGE MP Color Effect Set

For natural effects to individualise dentine and cervical powders. Four supplementary GUM powders facilitate the restoration of naturally appearing gingival parts.

VINTAGE MP Whitening Set

This set is ideal for the reproduction of bleached teeth in the shades W0, W1, W2 and W3.

Technical data

(According to EN ISO 9693/2000)

VINTAGE MP works perfectly in combination with all PFM alloys within a CTE range from 13.6 to $15.2 \times 10^{-6} \text{K}^{-1}$ (25 - 500 °C).

		Coefficient of Thermal Expansion (25 - 500 °C)	Glass Transformation Point
Base Opaque	2. / 4. Firing	$11.5 \times 10^{-6} \text{K}^{-1}$	598 °C
Shade Opaque	2. / 4. Firing	$12.4 \times 10^{-6} \text{K}^{-1}$	594 °C
Body, Incisal, Cervical, Opaque Dentin, Effect	2. / 4. Firing	$12.3 \times 10^{-6} \text{K}^{-1}$	557 °C
Correction	2. / 4. Firing	$11.7 \times 10^{-6} \text{K}^{-1}$	528 °C

We would like to thank Mr. Andreas Dücomy, Lübeck, Germany, and Mr. Dominique Olivier, Marzy, France, for their friendly support and for providing the images.



Dieses Dokument wird Ihnen zur Verfügung gestellt von:

Med-Dent24 Handelsgesellschaft mbH
Gotenweg 7
63128 Dietzenbach

Telefon: +49 (0)6074 803 3615
Telefax: +49 (0)6074 803 4092
E-Mail: info@med-dent24.com

Registergericht: Offenbach am Main
Registernummer: HRB 56518
Umsatzsteuer-Identifikation-No.: DE307869540

Geschäftsführerin: Ana Ban